

# sapa:

NEW

## Crown

Residential Door Kit





**Peace of mind**  
**Advanced security**



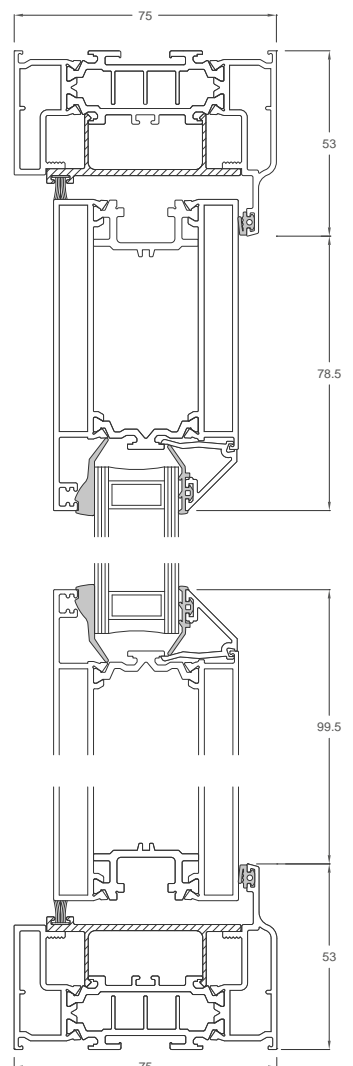
# Crown residential door

Classic and elegant

The Crown Residential Door, available in both single and double opening, has been designed to suit all applications including 'front' and 'back' door options. The sleek sightlines provide clean aesthetics without compromising performance and strength.

## Stylish elegant residential door

- Traditional design with slim sight lines to replicate timber doors
- Square cut rails and stiles
- Can achieve a  $U_d$  of 1.5 W/m<sup>2</sup>K
- Virtually maintenance free
- Dual colour available
- Outer frames use Si technology for improved thermal performance
- Dualsecure locking system for peace of mind
- Available with PAS24 Security
- Compatible with Crown window suite



# Designed for ease

## Versatile design



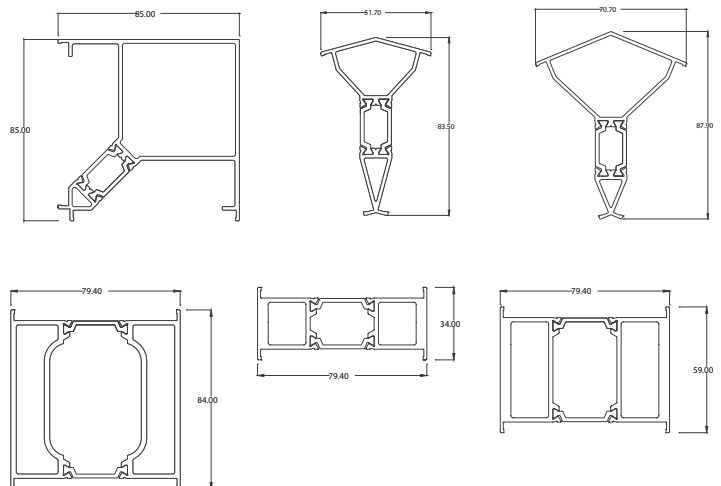
The Crown Residential Door is suitable for all project types, providing a perfectly adaptable door for your customers requirements.

- Part L compliant
- Door can be glazed from either inside or outside for flexibility
- Adjustable hinges
- Concealed fixings and corner jointing
- Extruded corner bracket for ease of fabrication and strength
- Available with standard, low or rebated low threshold
- Door can accommodate glazing units of either 24mm or 28mm
- Trim plates to conceal preps and fixings for improved aesthetics to both the door and the outer frame
- Square and sloped beading options to complement Crown Casement windows
- Full range of colour options
- Suited hardware available

### Versatile integrated door

The Crown Residential Door can be used independently, but can also be combined using Universal Frame coupler profiles, with our other 75mm systems.

This makes the door compatible with other Sapa 75mm systems for the creation of façades, screens or side lights.



# Simply secure

## Security at the heart of the door

Delivering peace of mind with security above and beyond the expected.

### Locking

Security is integral within the Crown Residential Door and high performance, multipoint hook locks are fitted as standard. All double doors are fitted with integral shoot bolts.

### Patented Locking to PAS24

The door is available to PAS24 specification utilising our unique 'Dualsecure' locking, which adds the benefit of a 5 Lever security "lock out" function, to deadlock the lock independently of the cylinder. This additional feature restricts the movement of all locking parts and provides exceptional levels of security. To ensure easy egress in case of emergency, such as fire, we provide this deadlock function with an easy to use thumbturn option on the inside. This reduces the need to keep additional keys and exit can be made quickly and safely. To improve weathering, the outside escutcheon for the deadlock has an ingenious internal shutter system, which restricts air flow.

### Hinges

The Crown Residential Door also features a robust bespoke hinge, providing high security, minimal intrusion and an integrated hinge bolt, offering increased resistance to forced entry. The hinge boasts unique functionality allowing full adjustment of the door during installation, ensuring correct alignment of door and frame.



### Strength throughout

The inherent strength of aluminium, combined with our Dualsecure system, provides a truly strong door.

New three chamber profile design and construction methods, deliver increased strength and performance to the new Crown Residential Door.

Coupled with the new security hinge and the proven Dualsecure locking systems, the Crown Residential Door provides a perfect solution.



# Cut down kits available

On your shelf, when you need it!

Kits are pre-cut and prepped product, boxed and ready for you, when you need it. Produced locally in the UK via a dedicated order process implemented by experienced operatives utilising CNC machining. Quality checked Kits supplied with the required accessories can save you money, reduce time and increase the flexibility of your operation.



## Single and double door “Cut Down” kit

The concept is simple, one door providing solutions for Left and Right Hand, Open In or Out with the minimal number of components. The cut down kit requires only square cut saw operations to Door and Frame elements and minimum finishing, all other preparations are pre machined allowing speedy turnaround of client orders. Standard Cut Down Kits are produced in White and Grey, with White and Black Hinges respectively.

These kits held locally, mean you are ready to respond to customer demand.

Need to replace doors in a hurry? You can assemble and supply from stock within hours, not days or even weeks. With a Crown Residential Door, you are ready to meet your customers delivery requirements.

Single Size:	1074 x 2230mm 28mm Glazing pocket (square bead)
Double Size:	2072 x 2230mm 28mm Glazing pocket (square bead)

Midrail kits, locking options and handles are all ordered separately to give you and your customer greater flexibility.

All Kits have dedicated fabrication and installation details and a complete manual is available for reference.

## Single and double door bespoke bits

Made to measure kits are also available, allowing where time is less of a factor, you need something a little different, specific colour or you just want to avoid any machining to free up time.

### Bespoke kit options include:

Single Doors

Double Doors

Standard and Low Threshold options

24 & 28mm glazing

Square or sloped beading

Single and Dual Colour

PAS24 security with patented 'Dualsecure' locking

# Suited to complement

## Hardware options

Silver



Matt black powder coated



Gold



Pure white powder coated



Polished chrome



Polished gold



## Specification

### Single Doors

Standard Threshold	Min 600mm x 1879mm	Max 1074mm x 2230mm
Low Threshold	Min 600mm x 1865mm	Max 1074mm x 2216mm
Rebated Low Threshold	Min 600mm x 1863mm	Max 1074mm x 2214mm

### Double Doors

Standard Threshold	Min 1133mm x 1879mm	Max 2072mm x 2230mm
Low Threshold	Min 1133mm x 1865mm	Max 2072mm x 2216mm
Rebated Low Threshold	Min 1133mm x 1863mm	Max 2072mm x 2214mm
Maximum Leaf Weight	120kg	
Glazing thickness	24mm or 28mm	

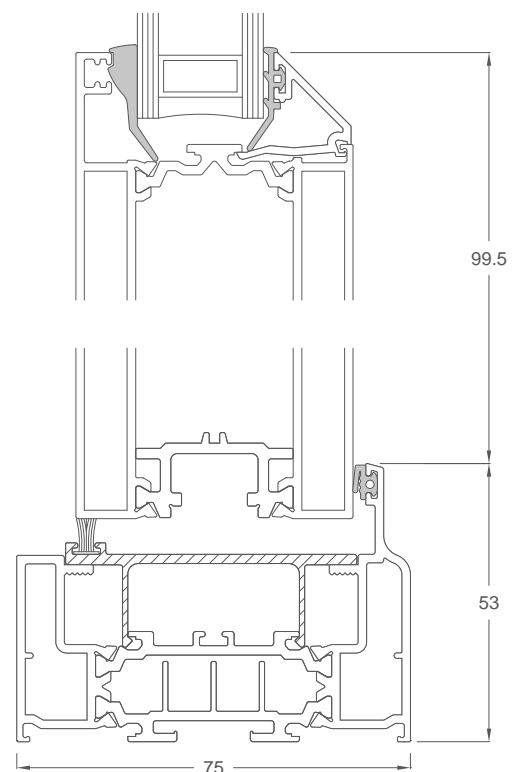
### Weather Performance

#### Single Doors

Air Permeability	Standard Threshold Class 3	Low Threshold Class 3
Water Tightness	Class 3A	Class 6A
Wind Resistance**	Class 3 (1200 Pa)	Class 3 (1200 Pa)

#### Double Doors

Air Permeability	Standard Threshold Class 2	Low Threshold Class 2
Water Tightness	Class 4A	n/a
Wind Resistance**	Class 3 (1200 Pa)	Class 3 (1200 Pa)



\*\* Exposure category varies with width/height of door and mullion/transom used, as these are the only unsupported members. An accurate figure can be obtained using BS6399:Part 2 calculations.



# sapa:

Your local Sapa fabricator

Sapa is part of the worldwide Hydro Group, which has over 33,000 employees, in more than 40 countries across the globe. The group develops and market high value-added profiles in aluminium and are the leading independent producer of aluminium profiles in the world.

Backed by the resources of the group, Sapa works together with Technal and Wicona to offer architects, specifiers and its customers a wide range of innovative aluminium systems for curtain walling, windows, doors and specialist applications.

## Sapa

Severn Drive, Tewkesbury  
Gloucestershire. GL20 8SF  
T 01684 853500

[www.sapabuildingsystems.co.uk](http://www.sapabuildingsystems.co.uk)

The Building Centre, 26 Store Street  
London. WC1E 7BT  
T 0207 636 4186

By  Hydro